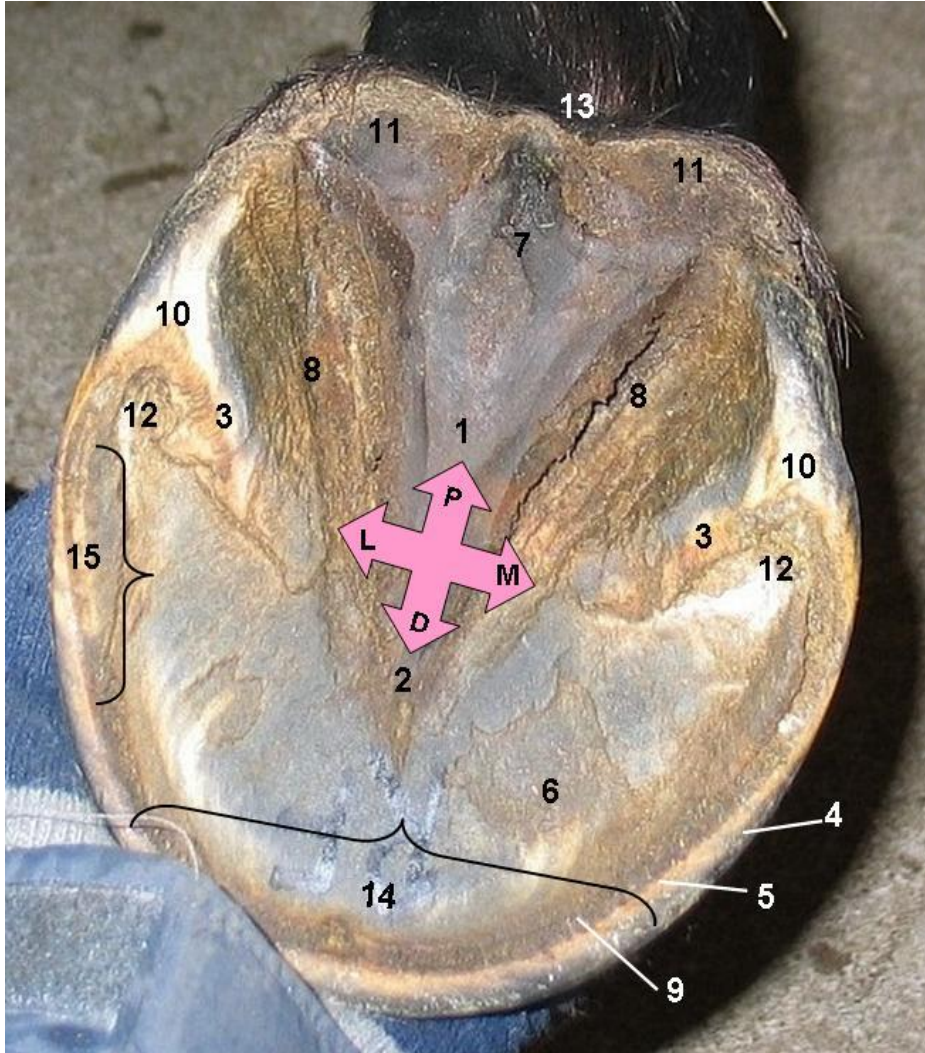


# PARTS OF THE HOOF



## Anatomy of the Equine Hoof:

1. Frog
2. Frog Apex
3. Bars
4. Outer Wall (pigmented)
5. Inner Wall (un-pigmented)
6. Sole
7. Central Sulcus
8. Collateral Grooves
9. White Line
10. Angle of Bar, or "Heel Purchase"
11. Heel Bulbs
12. Seat of Corn
13. Digital Cushion (lies under, and behind frog)
14. Toe
15. Quarters (on both sides of foot)

**D**=Dorsal (front of hoof)

**P**=Palmar (toward the heel)

**M**=Medial (inside)

**L**=Lateral (outside)